

Kameigumi

Message from the CEO



Kameigumi Co., Ltd. has been running its business as a local general construction company for more than a century since the establishment in August 1906 with a motto, "we offer products that bring comfort to our customers."

We cannot be more grateful for the unceasing patronage you have offered us up to this day.

Our service never ends but continues even after the completion of our construction work.

This is because we believe that "a true relationship with our customers" starts when we complete a construction and hand it over to the customer.

Thus, we provide continuous care for the buildings we made even after the building completion to bring satisfaction to our customers and to nurture long lasting relationships with our customers over generations.

We greatly appreciate your further guidance and support for our company.

Yoshinobu Asano
CEO Kameigumi Co., Ltd.

Corporate philosophies

- We keep growing and being innovative to fulfill our social responsibilities, being proud of our contribution to the safety of local communities and support of the foundation.
- We share pleasure with our customers by providing secure and safe buildings to them for their happy life.
- We promote the growth of our employees and prosperity of our company on the ground of satisfaction of our customers.
- We conduct environmentally friendly activities to develop a society that we can be proud of to the generation and community of a century from now.



Eco-friendly

•Creating a human-friendly, community-friendly and earth-friendly environment

Kameigumi Co., Ltd. has built an environment required in each time period through our civil engineering, architectural and housing business activities for more than 100 years.

Our skills have enabled creating something valuable from nothing. Such 'something' can be houses to keep off rain, offices and factories to conduct corporate activities and infrastructures such as roads and bridges to bring convenience and efficiency to local communities. In addition, the value we pursue has changed with time from convenience to comfort and to energy conservation while the dimension in our understanding of an environment has also greatly expanded from the private sphere to the community sphere and even to the global sphere now as time passes.

However, the activities of Kameigumi have been always based on satisfaction of customers and development of local communities in order to create an environment fitting with the times no matter how it changes. This policy has been unchanged and passed down to this day.

What required in future generations is 'what we build should be harmless to the environment and should be always environmentally friendly.' Protecting the global environment means protecting the environment of our communities and ourselves, thus, we aim to maintain a better environment for the generation and community of 100 years from now.

Managerial philosophy

- Nurturing humans, constructing buildings and developing communities

Behavioral policies

- We try to understand the situation of customers
- We try to improve ourselves
- We try to contribute to local communities



Green construction company

Transformation into a green construction company

Kameigumi Co., Ltd. is changing from a conventional local general construction company to a green construction company.

'Green construction company' is a new feature of upgraded Kameigumi Co., Ltd. that reduces burdens on the global environment and creates sustainable local communities on the ground of its civil engineering, architectural and housing techniques obtained through the history of more than 100 years in order to pass down the best environment to the generation and local communities of 100 years from now.

Kameigumi

Eco-business Green, construction, company

Eco-business Department is moving forward step by step to realize a low-carbon society with people in this region. Introducing natural energies, conducting energy-saving diagnosis, reducing carbon emission to zero in our offices and promoting 'local production for local consumption in energy' are the major activities of our Eco-business Department to prevent global warming.

Regarding introduction of natural energies, we provide high-quality installation service of a solar power generation system etc. at a reasonable price with assured after-the-sale-service. As regards energy-saving diagnosis, we propose the best package plans in consideration of energy-saving and cost-saving, based on our know-how on installation of facilities and renewal construction, which we have accumulated through our experiences of more than 100 years in this field.

In addition, we will be more engaged in renewal construction to promote the use of LED facilities, sales of green electric power, service utilizing domestic credit-card systems, carbon offset business, etc. as well as consulting business for the environment and energy, to realize a eco-friendly and rich society and to develop a community which can sustain both good environment and economy compatibly.

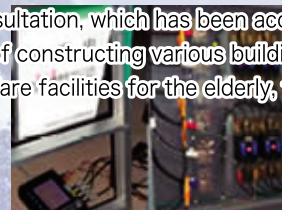
Solar power generation business Photovoltaic

We install a solar power generation system in both corporate and private buildings to go into the age of renewable energy.



Energy-saving diagnosis Energy, Service, Company

Energy-saving diagnosis enables proposing the best package plans for introducing up-to-date equipment and renewing facilities, in consideration of energy-saving and cost-saving, based on our know-how on introduction of facilities, renewal construction and energy consultation, which has been accumulated through our experiences of constructing various buildings such as hotels, offices, welfare facilities for the elderly, factories, etc.



Renewal of facilities with LED lighting Light Emitting Diode

We are using the latest ceramic-packaged LED of the highest-quality produced by Nichia Corporation, a global Japanese LED manufacture, which we Japanese people are proud of.



Carbon Offset Carbon Offset

We will further work on selling certificates of green electronic power, providing service based on the certificates, application service with domestic credit-card systems, etc.



Kameigumi

Architectural Department

Our Architectural Department has aimed to provide 'safe, secure and comfortable' buildings in wide-ranged works such as government and public works, works for shrines and temples and private works throughout our history of more than a century.

We can manage a variety of architectural works and propose the best plans which rightly meet customers' needs.

We are exerting ourselves to provide products which can satisfy our customers with our 'quality skills, detailed service and flexible knowledge,' to offer continuous support even after completion of the construction, and to nurture long lasting relationships with our customers.

Government and public works

Rich knowledge to correctly respond to customers' needs



Gymnasium of Tokushima Prefectural Naruto High School



Torii Memorial Museum



Shikisai-kan of Asutamu Land Tokushima

Works for shrines and temples

Abundant experiences and quality skills



Gokoku Shrine



Entoku-ji temple



Daiji-do hall of Ryozen-ji temple

Private works

Flexibility to catch up the needs of the times



Bean Stalk Nursery Tokushima



Riverain Mansion Katsuura



Collective House Najimi



Kameigumi

Civil Engineering Department

The mission of civil engineering is to establish a convenient, safe and secure foundation for our country and local communities by preventing natural disasters such as floods and landslides, and making roads and bridges. Our Civil Engineering Department is responsible for building civil engineering structures, which are social capitals, with flexible knowledge, strong physical strength and cooperativeness of the working staff in a responsive, cheerful and healthy working environment. We are making further efforts to establish a safer and securer social foundation with our technical strength, for an environment where nature and human can coexist in harmony.



Repair work of
Seto Fishery Harbor



Disaster prevention work
in Ozu



Disaster prevention work
in Kitanada



Construction work
for the trunk road
of the Old Yoshino River

Business performance of civil engineering works for the past 3 years

Business performance in FY 2010

The first reinforcement work of the bridge piers of an elevated bridge in Naruto in FY 2009 ordered by the MLIT	174,400,000 (JPY)
Maintenance work of National Route 11 and 55 in FY 2009 ordered by the MLIT	73,800,000
Bridge construction work of the Matsutani River under jurisdiction of Naruto Civil Engineering Office in FY 2009 ordered by TPG	70,045,000
The first construction work of the lighter's wharf of Muya Harbor in FY 2009 ordered by TPG	57,755,000
The third construction work to restore the original form of the tenth main water line of Nambu Water Channel ordered by CSAPB	57,300,000

Business performance in FY 2009

Renewal construction work of Shitaarai Bridge in FY 2007 ordered by the MLIT	254,300,000
Maintenance work of National Route 11 and 55 in FY 2008 ordered by the MLIT	91,000,000
Duct reinforcement work and surface maintenance work in the Ninth Construction Area in FY 2007 ordered by Naruto Municipal Government	49,500,000
Earthquake-resistance reinforcement work in the district under jurisdiction of Hiwasa National Road Branch in FY 2008 ordered by the MLIT	46,900,000
The second construction work of the drainage canal No. 7 in Danzeki District, in FY 2008 ordered by TPG	32,300,000

Business performance in FY 2008

Reinforcement work of bridge piers in the district under jurisdiction of Tokushima National Road Branch in FY 2007 ordered by the MLIT	106,400,000
Onstruction work to restore the original form of the main water lines of Nambu Water Channel ordered by CSAPB	103,500,000
The fifth waterproofing work of banks in Kamojima District in FY 2007 ordered by the MLIT	88,200,000
Improvement work of road constructions and shoulders in the district under jurisdiction of Tokushima National Road Branch in FY 2007 ordered by the MLIT	86,000,000
Bank repair work of the Shinike River in Minamihama District, Muya Town in FY 2007 ordered by TPG	32,404,000

※MLIT = Ministry of Land, Infrastructure, Transport and Tourism

※TPG = Tokushima prefectural Government

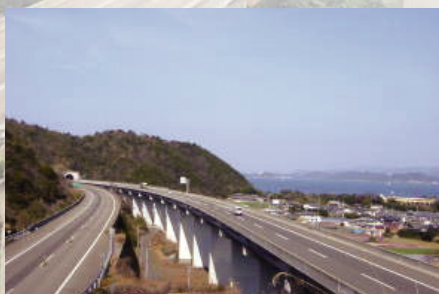
※CSAPB = Chugoku and Shikoku Agricultural Policy Bureau

Awards in recent years

- Awarded in FY2009 for the excellence of the maintenance work of National Route 11 and 55 in FY2009 by the Tokushima Office of River and National Highway, the Ministry of Land, Infrastructure, Transport and Tourism
- Certified on March 25, 2010 for the capability to continue business including business continuity planning by the Shikoku Constructors' BCP (business continuity planning) Examining Committee, Shikoku Regional Development Bureau, the Ministry of Land, Infrastructure, Transport and Tourism



Naruto Uchinoumi Park



Elevated bridge in Tosadomariura



Konaruto Ohashi Bridge

Kameigumi

Housing Department

Creating and providing comfortable living environments and spaces

We, Kameigumi believe that our primary contribution to a local society is to provide comfortable living environments and spaces for people to live safely and securely.

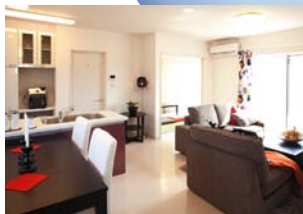
Our Housing Department consists of 4 sections to support our customers throughout their whole life-cycle, with a variety of service ranging from new residential housing, which is a significant event as it is a big turning point of people's life, to remodeling, extension and reconstruction of the house according to the changes of their lifestyle and family structure, together with our continuous maintenance service to keep the good quality of the house.

Our full-time staff in each section is responsible for creating higher added-value to the housing life of our customers.



Technostruture

'Technostruture,' is a new construction method, using 'Technobeam' a compound beam made of wood and iron, our original highly-reinforced fasteners and state-of-the-art technologies such as seismic testing and structural calculation. This is the third option of construction methods utilizing the advantages of both wood and iron, which cannot be realized by single use of either wood or iron.

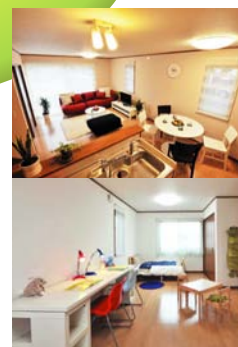


Customer service Room

Customer Service Room is the core section to keep the high value of new and remodeled houses throughout the lifetime of the residents. We provide various support service for comfortable housing life of our customers, including quick responses to a variety of customers' daily needs, regular door-to-door checks, etc.

Kando (impressive) House

The staff of Kando House is engaged in building houses with the key words, 'good price, high quality, sense of reassurance and great passion,' providing community-based hearty support service. We can exert any efforts to 'greatly impress our customers'. It is the happiest moment for us to hear the customers' voices such as "We can't be happier than having this house!" and "The choice of this house was absolutely right!"



Remodeling

You can directly experience the latest housing facilities and see the various construction components of each manufacturer in our large-sized show room.

We provide our service in all remodeling works ranging from small-scale works to solve a minor problem to remodeling works for water-related and exterior facilities and to large-scale extension and earthquake-proof construction works.



Kameigumi

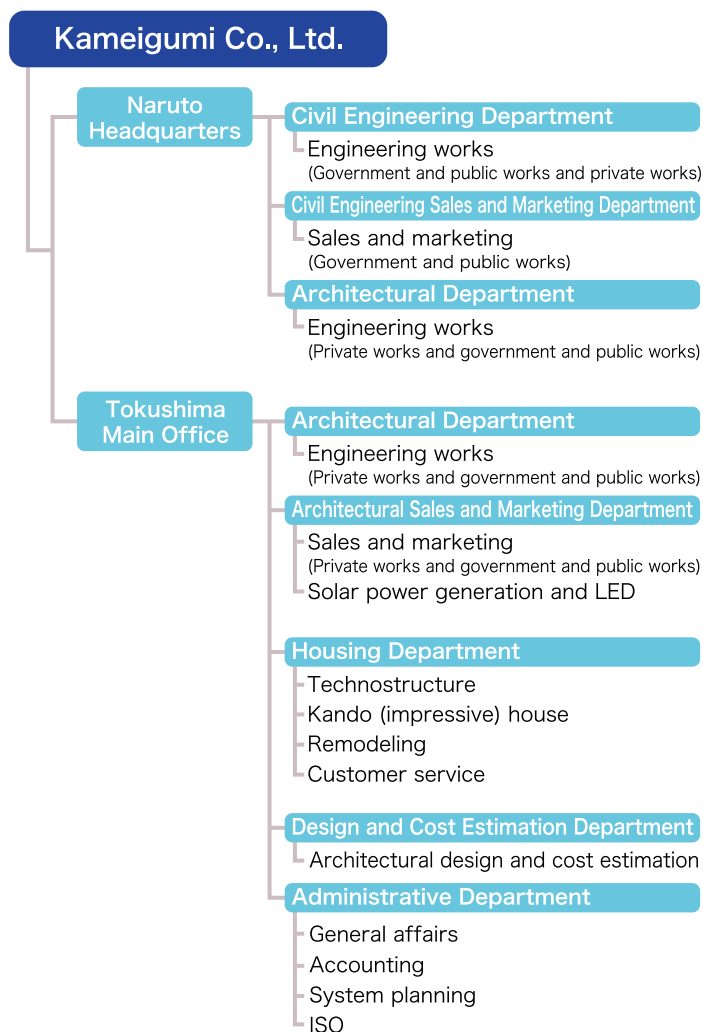
Company Overview

Name of company	Kameigumi Co., Ltd.
Capital	60 million JPY
Address	Headquarters 114 Shichimai Tateiwa-aza Muya-cho Naruto-shi Tokushima 772-0017 Japan Tel: +81-88-685-4178 Fax: +81-88-685-4179 Tokushima Main Office 20-2, 6-chome Bandai-cho Tokushima-shi Tokushima 770-0941 Japan Tel: +81-88-625-2100 Fax: +81-88-625-2102
Construction revenue	2.3 billion JPY (as of FY 2010)
Employees	44 (as of FY 2010)
Line Banks	Naruto Branch of Shikoku Bank, Naruto-higashi Branch of Awa Bank, Naruto-higashi Branch of Tokushima Bank and Naruto Branch of Tokushima Shinkin Bank
Construction Permits	Tokushima prefectural governor's permit for construction business; (Special-22) No. 75027 Registration of architecture office; Kameigumi Co., Ltd., first-class architecture office No. 61112 Tokushima prefectural governor's permit for building lots and buildings transaction business; (2) No. 2640

Corporate history

October	1906	Kameigumi Corporation was established.
October	1953	Kameigumi Corporation was changed to Kameigumi Co., Ltd.
October	1972	Kameigumi Co., Ltd. was relocated to the present site.
April	1997	Kameigumi Co., Ltd. became a member company of House 21 Tokushima VC (voluntary chain).
October	1997	Tokushima Main Office was established.
October	2003	Kagawa Sales Branch was established.
September	2004	A sponsorship contract with Tokushima Vortis was concluded.
October	2004	A welfare equipment-providing office 'House 21 Tokushima' was established.
December	2004	A contract with Panasonic Electric Works Co., Ltd. was concluded. Kameigumi Co., Ltd. became a member company of the National Builders Group.
May	2008	Kameigumi Co., Ltd. became a member company of Kando (impressive) House VC.
March	2009	A contract with IKEA Japan was concluded.
December	2009	PV contract with Suntech Power Japan Corporation was concluded.

Organization of Kameigumi



Business Content

- General construction business:
Civil engineering business (roads, rivers, ports, harbors, sewage systems, etc.)
Architectural construction business (hospitals, shrines, temples, factories, commercial facilities, condominiums, etc.)
Housing business (new housing, remodeling and customer service)
- Trade and rental of real estate and the intermediary service
- Sales and rental of welfare and nursing care items

Quality assurance

ISO9001 Management System: Registration number; JQA-QM7222

Qualified personnel

License (registered)	First class	Second class
Architect	8	15
Building construction supervisor	14	2
Civil engineering construction supervisor	17	2
Electrical engineering and construction supervisor	2	2
Piping construction supervisor	6	
Landscape construction supervisor	5	
Construction business accounting clerk	1	3
Surveyor	3(surveyor)	4(sub-surveyor)
Real-estate transaction manager		6
Interior coordinator		3
Welfare residential environment coordinator		5
Sewerage engineer		3
Sewage engineering examination		5